

KIDS MENU

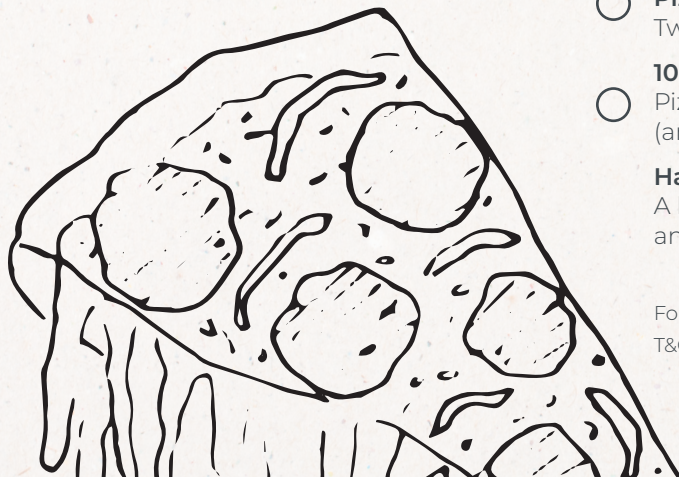
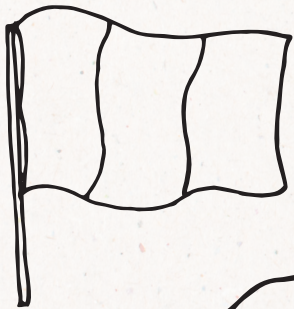
Caprice

EST 1969 AUTHENTIC LOG PIZZA



STARTERS £1.50

- Homemade Minestrone Soup**
Served with our in house fresh bread
- Potato Wedges**
With or without cheese
- Onion Rings**
Served with dip
- Garlic Bread**
With or without melted cheese



MAIN COURSES £5.50

- Macaroni & Cheese**
Pasta tubes with fresh cream and mozzarella
 - Spaghetti Carbonara**
Bacon with a creamy parmesan sauce
 - Napoli Pasta**
Homemade Napoli sauce with a choice from Spaghetti Penne or Rigatoni
 - Bolognese Pasta**
Lean mince and tomato sauce with a choice from Spaghetti, Penne or Rigatoni
 - Chicken Strips**
Breaded fresh chicken strips served with chips and choose from peas or sweetcorn
 - Pizza Fun Shape**
Pizza with tomato and cheese
Choose your shape: Fish, Batman, Love heart
(any extra toppings 50p each)
 - Pizza & Chips**
Two slices of pizza with chips
 - 10" Round Pizza**
Pizza with tomato and cheese
(any extra toppings 50p each)
- Half & Half**
A kids version of our famous half pizza and pasta with any pasta from this menu

For advice on food allergies, please ask a member of staff.
T&C- Available for children up to 10 years old

DESSERTS £2.50

Make your own One Scoop Sundae

Pick your flavour - Vanilla, Strawberry, Chocolate Chip or Mint Choc Chip

Add Fruit - Strawberries, Blueberries or Bananas

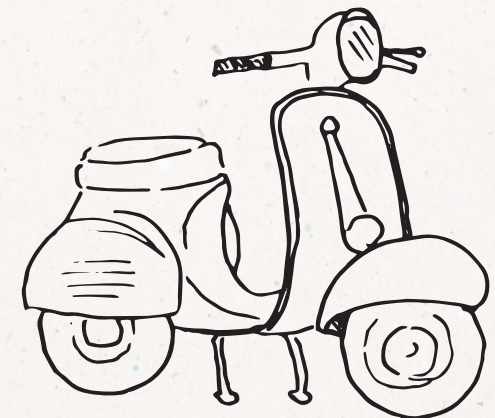
Add a Sauce - Chocolate, Strawberry, Salted Caramel

Now a Topping - Marshmallows, Sprinkles, Chocolate Chips

* £1.20 for extra scoop

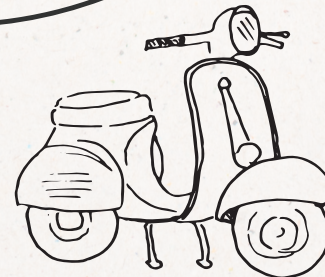
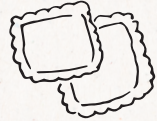
DRINKS

- Fresh Apple or Orange Juice** £1.50
- Fruit Shoot** £1.50
Apple, orange, blackcurrant
- Coke, Diet Coke, Lemonade** £2.50
- Milk** £1.50



Caprice

EST 1969 AUTHENTIC LOG PIZZA



- PISA
- OLIVES
- PIZZA
- GONDOLA
- SCOOTER
- FLAG
- VOLCANO
- COLISEUM
- CARNIVAL
- PIGEON
- PASTA

H	U	C	P	V	C	C	P	W	O
P	I	Z	Z	A	O	A	A	E	O
I	C	W	H	V	L	R	S	W	L
G	S	H	F	O	I	N	T	P	I
E	V	Z	L	L	S	I	A	I	V
O	C	S	A	C	E	V	O	S	E
N	G	J	G	A	U	A	O	A	S
O	R	H	V	N	M	L	K	H	L
B	I	S	C	O	O	T	E	R	Q
L	G	O	N	D	O	L	A	F	X